





Setting your
birthdate as
password?



BE Alert Stay SAFE

Copyright © 2021 National Stock Exchange of India Ltd.
All rights reserved



Look who is
celebrating!



BE Alert Stay SAFE

Copyright © 2021 National Stock Exchange of India Ltd.
All rights reserved



Use **strong passwords** or **passphrases** that do not contain personal information such as family names, nicknames, anniversaries, birthdays, pet names etc.



BE Alert Stay SAFE

Copyright © 2021 National Stock Exchange of India Ltd.
All rights reserved



Hey Rhea, login into my email and the password is bond007

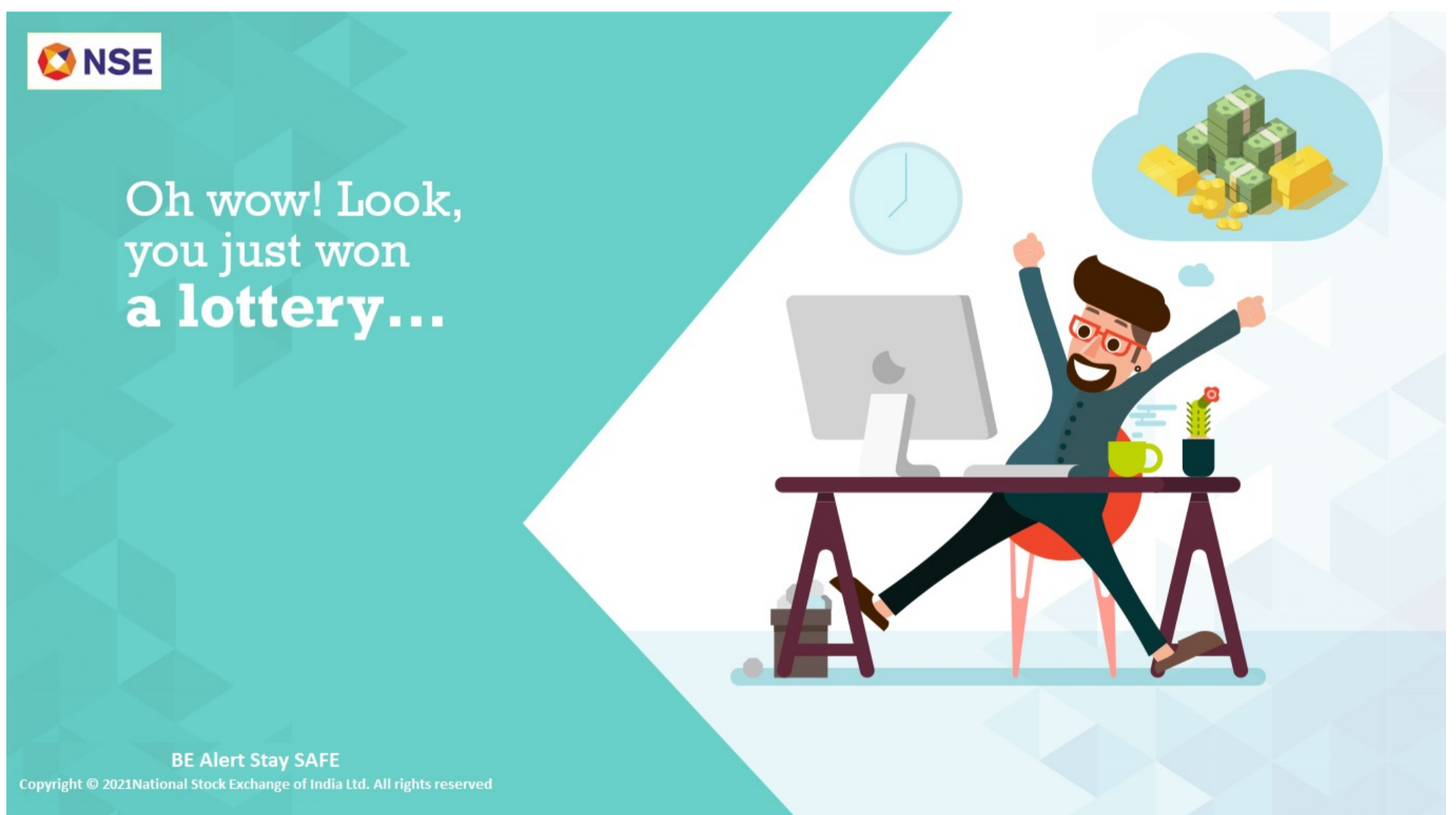
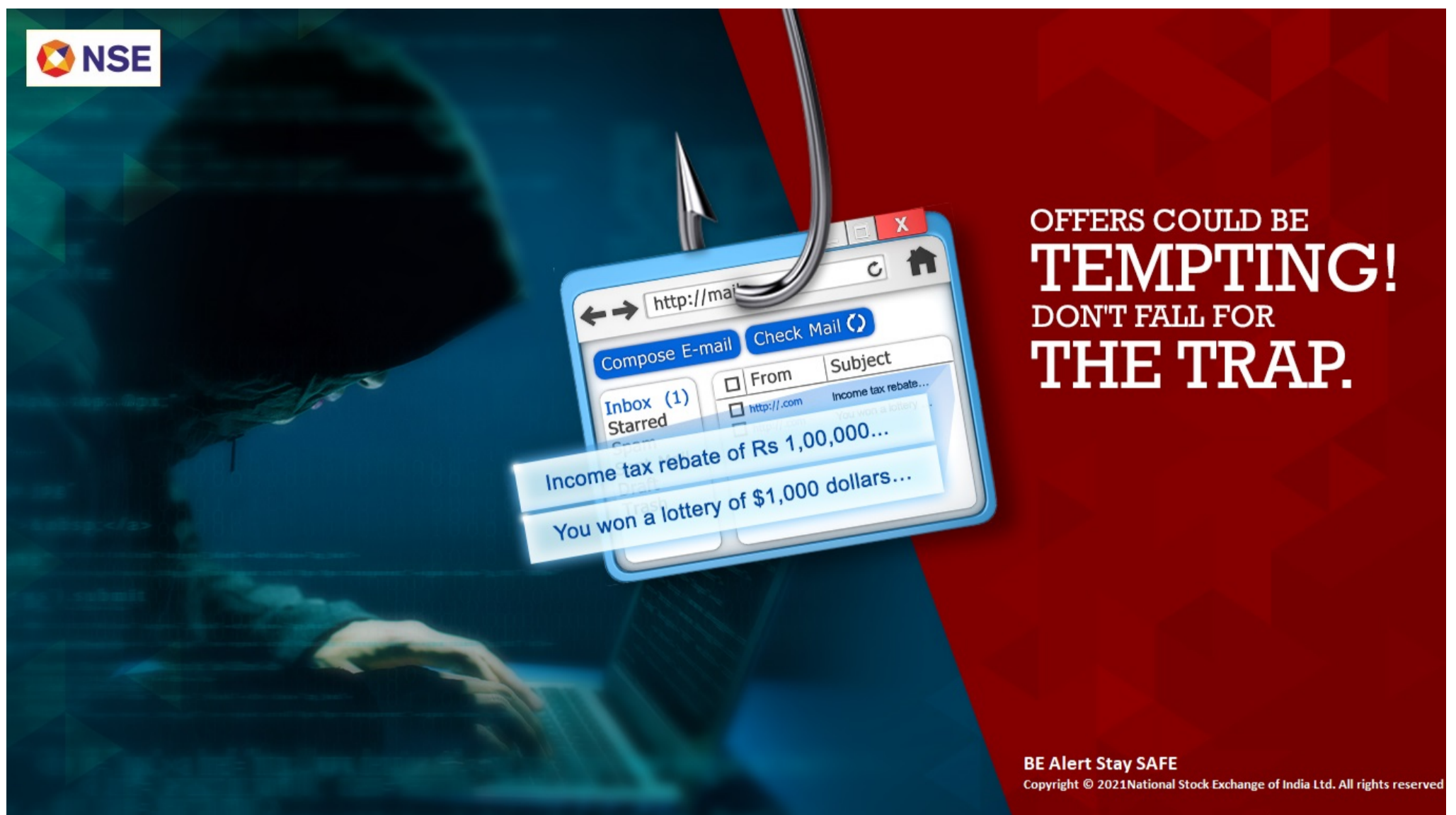
Wow.... and he thinks he is James Bond

SHARING OF PASSWORDS AND THAT TOO IN PUBLIC IS A RECIPE FOR DISASTER.

CREATE COMPLEX PASSWORDS AND DO NOT SHARE THEM WITH ANYONE....

BE Alert Stay SAFE

Copyright © 2021
National Stock Exchange of India Ltd.
All rights reserved





Or was it
a TRAP!?



BE Alert Stay SAFE

Copyright © 2021National Stock Exchange of India Ltd. All rights reserved




Beware of
malicious mails.
**Always
delete them!**



BE Alert Stay SAFE

Copyright © 2021National Stock Exchange of India Ltd. All rights reserved




NSE

Somebody “**interesting**” just sent you a friend request ...

And you **accepted it!**

BE Alert Stay SAFE

Copyright © 2021 National Stock Exchange of India Ltd.
All rights reserved



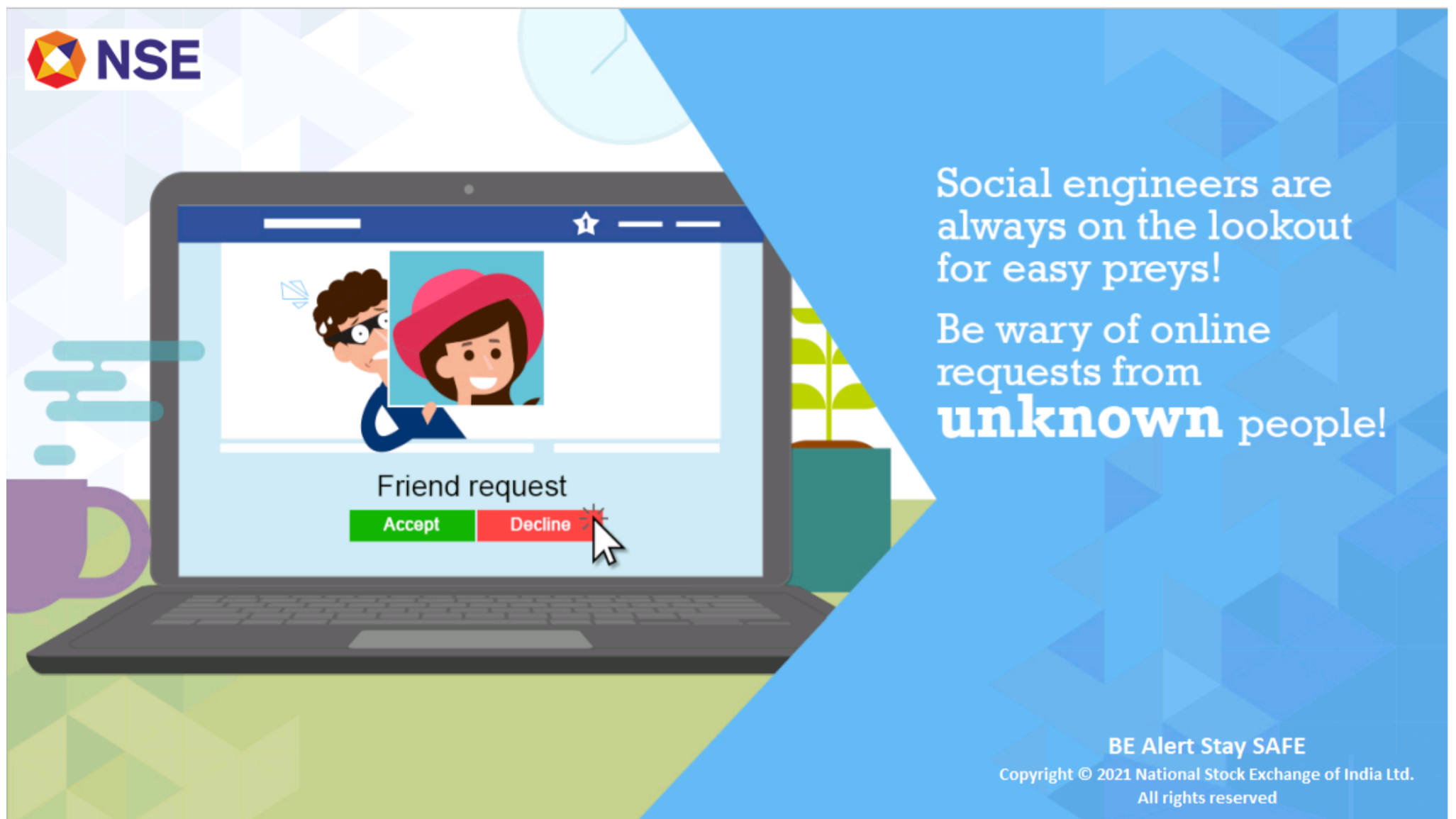

NSE

Look who you just befriended!

Do they still look **interesting?**

BE Alert Stay SAFE

Copyright © 2021 National Stock Exchange of India Ltd.
All rights reserved



Social engineers are always on the lookout for easy preys!

Be wary of online requests from **unknown** people!

BE Alert Stay SAFE

Copyright © 2021 National Stock Exchange of India Ltd.
All rights reserved